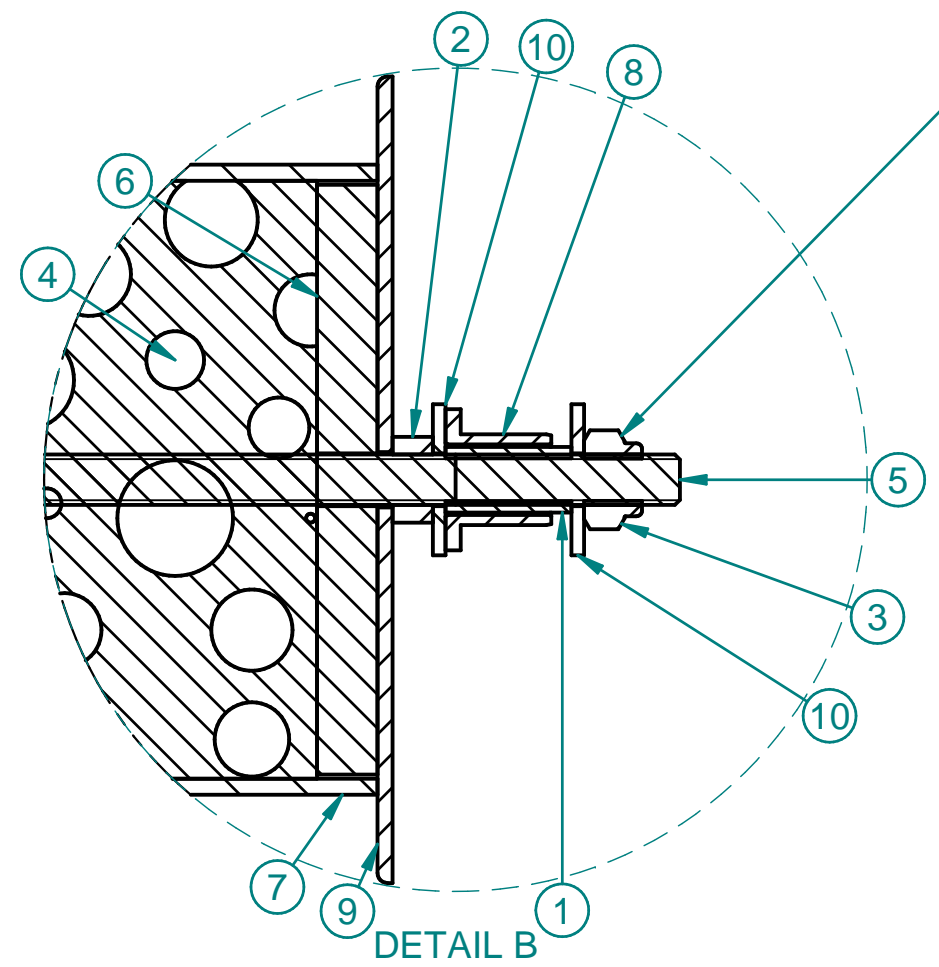
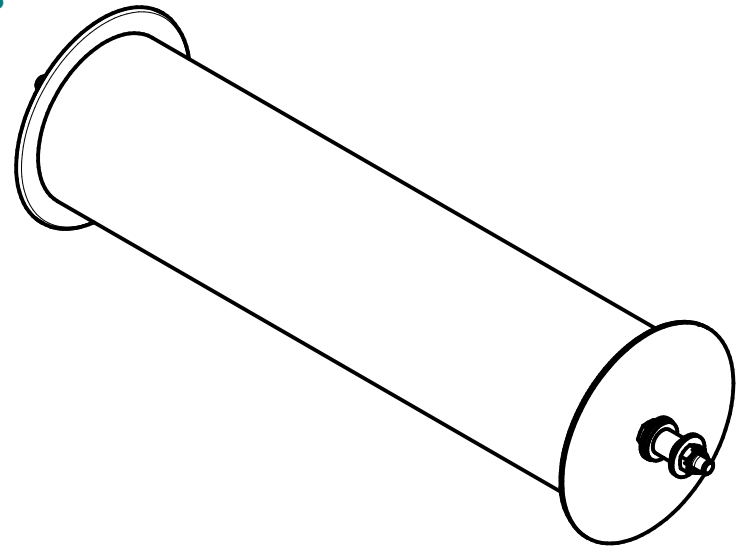



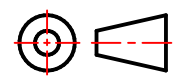
SECTION A-A
Tapered edge inside
Afgeschuinde kant aan de binnenkant



Attention: Don't fit the selflocking nuts to fast
Afterwards they have to be unscrewed

Let op: zelfborgende moeren niet te vast draaien.
Deze moeten weer losgedraaid worden

Nr	Quantity	Title	Article Nr.	Rev	Base mat.	Length
10	4	Mudwing repair washer M10	SLRCAR010	0	Galvanised steel	
9	2	Plate for weight roll	PLNJ012285-001	0	3,00 send.verz.pl.	-
8	2	Sliding Bearing 14 nylon-66	LAG14-001	0	Steel	-
7	1	PVC tube Ø 125x3.2	KSMPVC0030505	0	PVC	505
6	2	Centrate disk compensation rol	HOMJ012285-022	0	12,00 Betonplex	-
5	1	Threaded rod M10	DRAM10E8.80625	0	Steel	625
4	1	Grit for compensation roll	DIV0006-04	0	Gravel	-
3	2	Nylock hexagon nut M10	BMOM10EN	0	Galvanised steel	-
2	2	Hexagon nut M10	BMOM10E	0	Steel	-
1	2	Coupling M10x25	BDV0156	0	Steel	-

..... Pieces		Revision: A	Engineer: B. Kampert
		Remark: Centreerschijven toegevoegd	Rev. date: 9-9-2016
 Harselaarseweg 32 3771 MB Barneveld (NL) Tel. +31-(0)342-427000 Fax. +31-(0)342-427001 E-mail. info@jpe.org		Title: Weight roll B500 Double compensation	
		Date: 30-3-2015	
		Base mat.:	Mass: 15,217 kg
Article Nr.: ROLJ012285-006		Scale: 1:5	General tolerances acc.: ISO 2768-cL-E Plastics moulding : DIN 16901
Project Nr.:		Drawing Nr.: 012285-006	A3 

All rights are strictly reserved. Reproduction or issue to third parties in any form whatever is not permitted without written authority from the proprietors